

# CROSSBAR



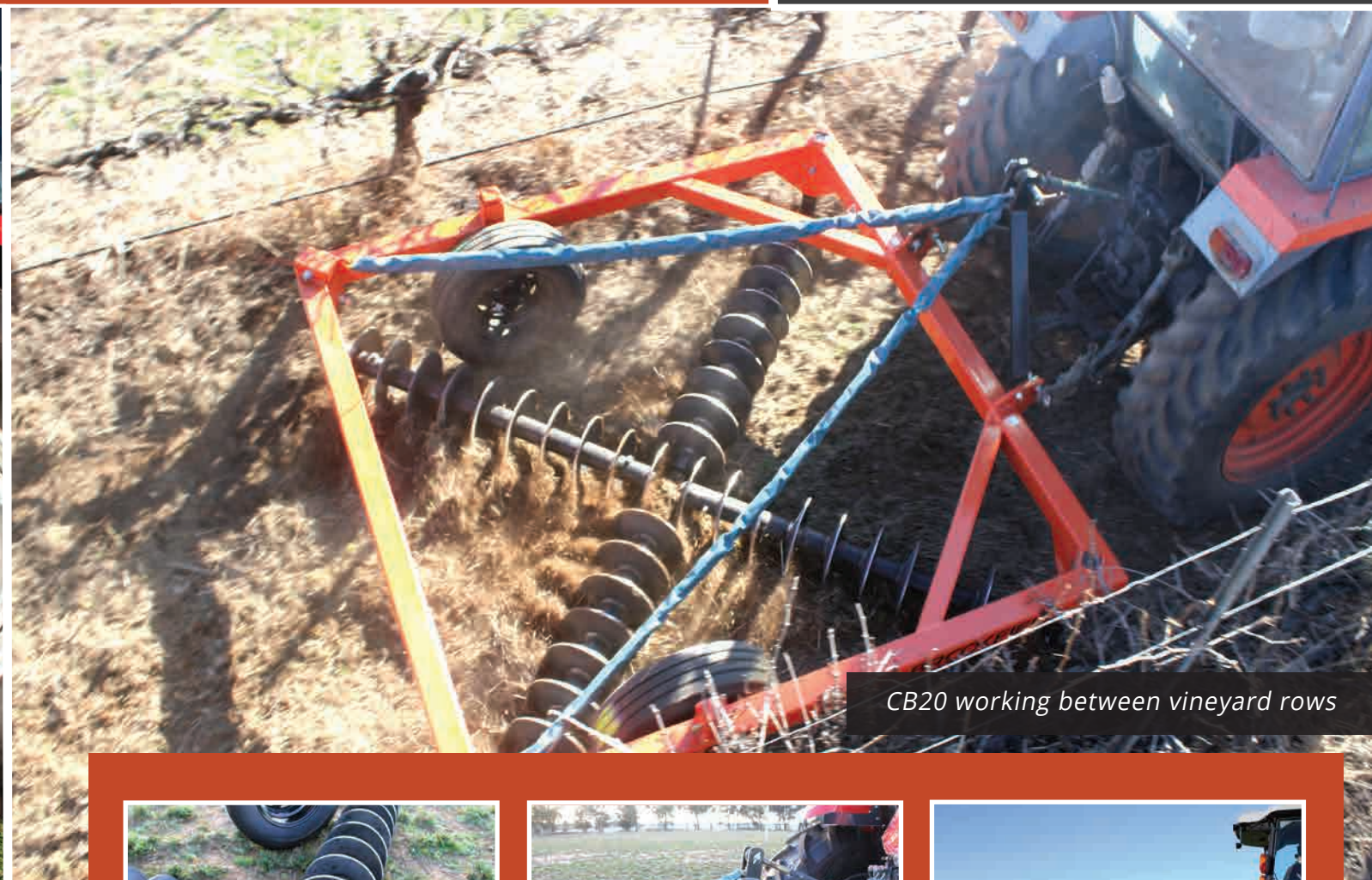
FARMING THE FUTURE

*CB20 working between vineyard rows*





Easily transported with hydraulic linkage



CB20 working between vineyard rows

- » Ideal for viticulture and horticulture
- » Reduce chemical costs
- » Improve soil health
- » Inter row renovation and weed control
- » Available in a range of sizes



## STANDARD features

- |                       |                                    |
|-----------------------|------------------------------------|
| » Hydraulic linkage   | » 1.5m, 2.0m & 3.0m working widths |
| » DC60 Rigid Flex     | » Weight 366 - 540kg               |
| » Chain weight 66kg/m | » Robust construction              |
| » Unique cross design |                                    |

## IT JUST KEEPS GETTING BETTER...

- » Level farm roads and repair bogged tracks
- » Low maintenance
- » No tools to adjust settings
- » Replaceable discs
- » Low horsepower requirements
- » Available in 1.5m, 2.0m and 3.0m working widths





# CROSSBAR MODELS & SPECIFICATIONS

MODEL	WORKING WIDTH		TRANSPORT WIDTH	TRANSPORT HEIGHT	TRANSPORT LENGTH	WEIGHT (KG)
	METRIC	IMPERIAL				
CB15	1.5M	4.9FT	1.90M	0.70M	2.03M	336
CB20	2.0M	6.5FT	2.40M	0.70M	2.53M	420
CB30	3.0M	9.8FT	3.40M	0.70M	3.53M	540

CROSSBAR (HORSEPOWER REQUIREMENT GUIDE)*			
CHAIN	MODEL		
	CB15	CB20	CB30
DC60 RIGID FLEX	40	60	80
* REFER TO TRACTOR MANUFACTURERS SPECIFICATION FOR LINKAGE CAPACITY.			



For more specific information, contact the  
BROOKFIELD® sales team on 1800 774 274 or [sales@brookfield.net.au](mailto:sales@brookfield.net.au)

The background of the logo features two large, overlapping circles in a medium gray shade. The word "BROOKFIELD" is written in a bold, white, sans-serif font across the center of these circles. Below it, the tagline "FARMING THE FUTURE" is written in a smaller, white, sans-serif font.

# **BROOKFIELD<sup>®</sup>**

**FARMING THE FUTURE**

**1800 774 274**

**[www.brookfield.net.au](http://www.brookfield.net.au)**

**[sales@brookfield.net.au](mailto:sales@brookfield.net.au)**